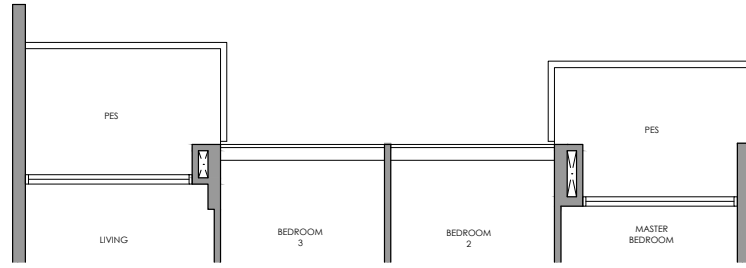
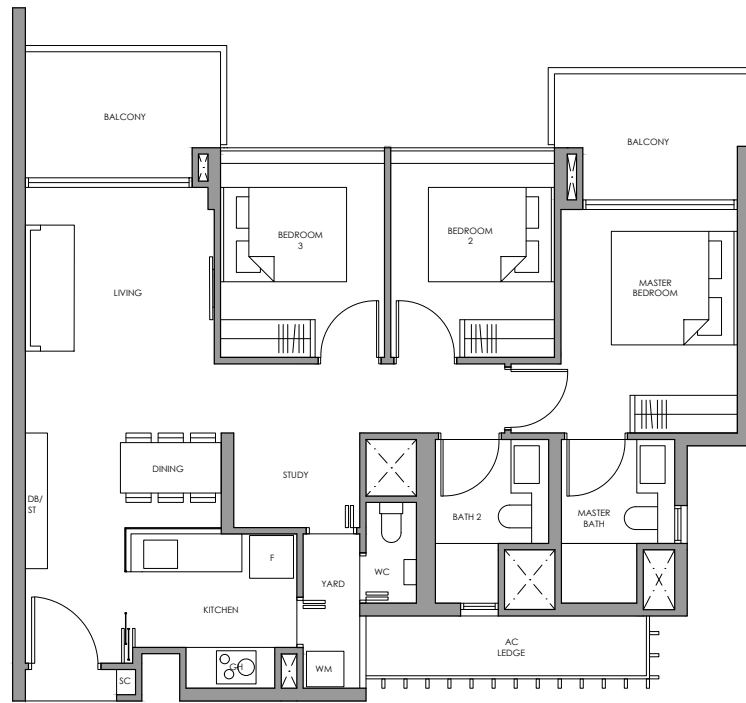


3-Bedroom + Study

Type CS1(p)



Type CS1



- | | |
|----------------------------|-------|
| Fridge | F |
| Gas Hob | GH |
| Shoe Cabinet | SC |
| Washer cum Dryer | WM |
| Distribution Board / Store | DB/ST |



Type CS1(p)

100 sq m / 1076 sq ft
Inclusive of 13 sq m PES
& 5 sq m AC Ledge

Block 8
#01-23



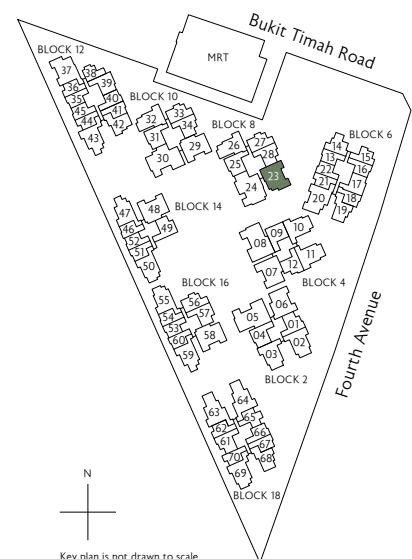
Type CS1

100 sq m / 1076 sq ft
Inclusive of 13 sq m Balcony
& 5 sq m AC Ledge

Block 8
#02-23 to #10-23



* Mirror Image ^ High Ceiling

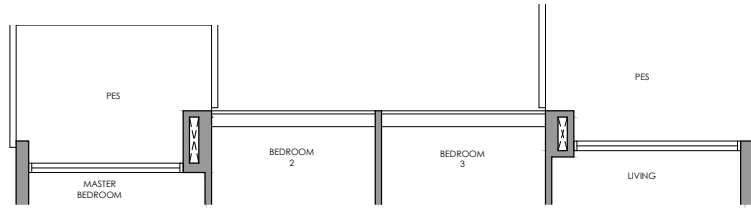


Key plan is not drawn to scale

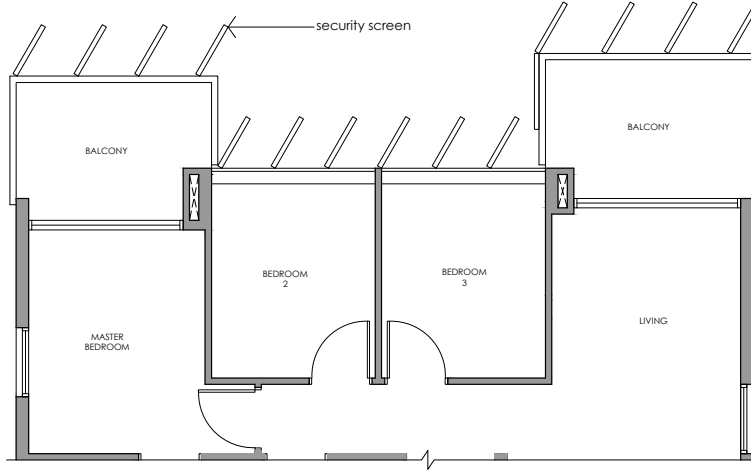
All plans are subject to change as may be required or approved by the relevant authorities. All floor areas are approximate measurements only and are subject to final survey. The balcony shall not be enclosed except with the approved balcony screen. For an illustration of the approved balcony screen, please refer to the diagram annexed hereto as "Annexure 1"

3-Bedroom + Study

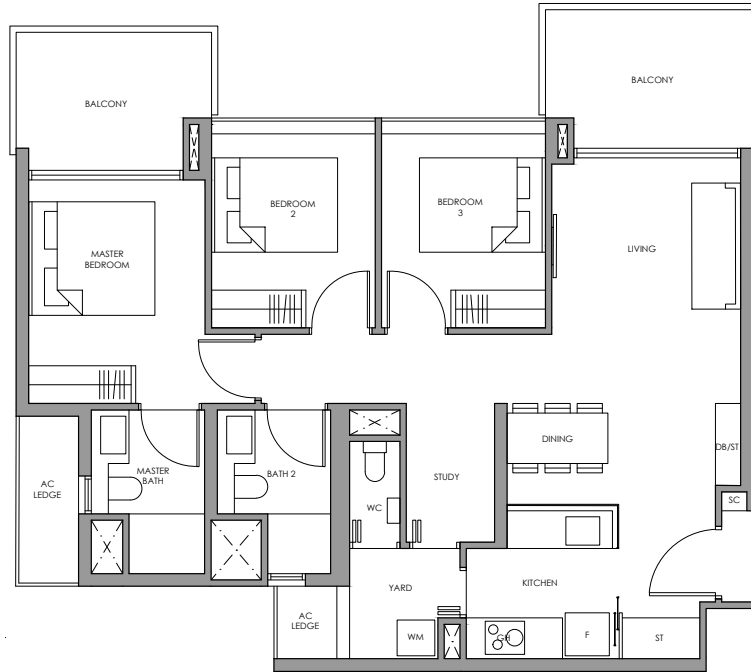
Type CS2(p)



Type CS2
WITH SECURITY SCREEN



Type CS2



- | | |
|----------------------------|-------|
| Fridge | F |
| Gas Hob | GH |
| Shoe Cabinet | SC |
| Washer cum Dryer | WM |
| Distribution Board / Store | DB/ST |



Type CS2(p)

103 sq m / 1109 sq ft
Inclusive of 15 sq m PES
& 5 sq m AC Ledge

Block 10
#01-29

Block 14
#01-48 *

Block 16
#01-58



Type CS2

103 sq m / 1109 sq ft
Inclusive of 15 sq m Balcony
& 5 sq m AC Ledge

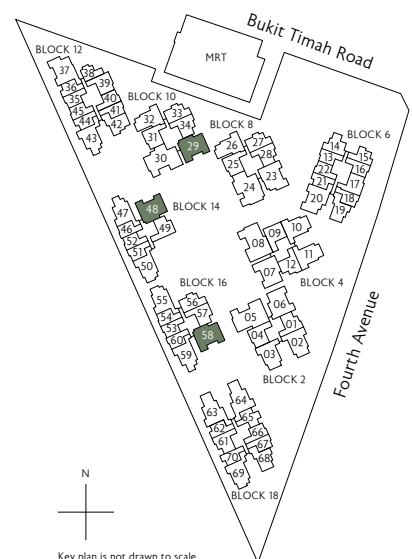
Block 10
#02-29 to #07-29
#08-29 to #10-29 (security screen)

Block 14
#02-48 *^

Block 16
#02-58 ^



* Mirror Image ^ High Ceiling

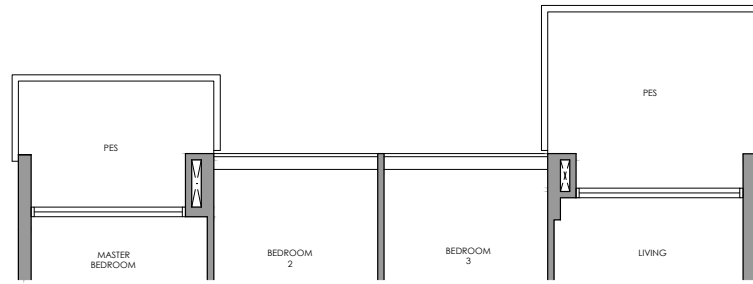


N
Key plan is not drawn to scale

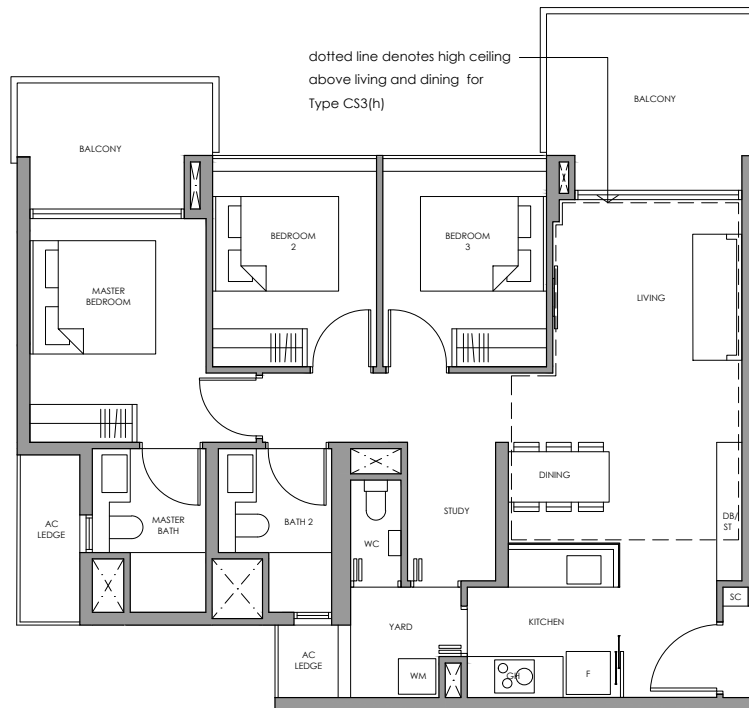
All plans are subject to change as may be required or approved by the relevant authorities. All floor areas are approximate measurements only and are subject to final survey. The balcony shall not be enclosed except with the approved balcony screen. For an illustration of the approved balcony screen, please refer to the diagram annexed hereto as "Annexure 1"

3-Bedroom + Study

Type CS3(p)



Type CS3
Type CS3(h)



- | | |
|----------------------------|-------|
| Fridge | F |
| Gas Hob | GH |
| Shoe Cabinet | SC |
| Washer cum Dryer | WM |
| Distribution Board / Store | DB/ST |

+
Type CS3(p)
105 sq m / 1130 sq ft
Inclusive of 16 sq m PES
& 5 sq m AC Ledge

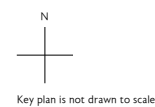
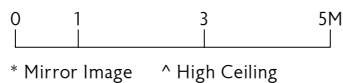
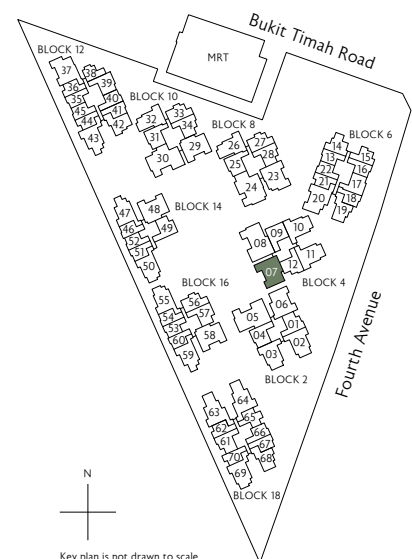
Block 4
#01-07

+
Type CS3
105 sq m / 1130 sq ft
Inclusive of 16 sq m Balcony
& 5 sq m AC Ledge

Block 4
#02-07 to #05-07

+
Type CS3(h)
105 sq m / 1130 sq ft
Inclusive of 16 sq m Balcony
& 5 sq m AC Ledge

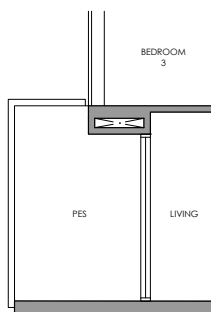
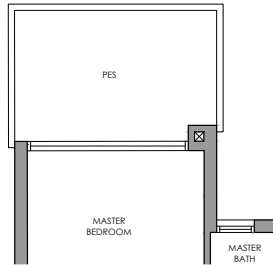
Block 4
#06-07



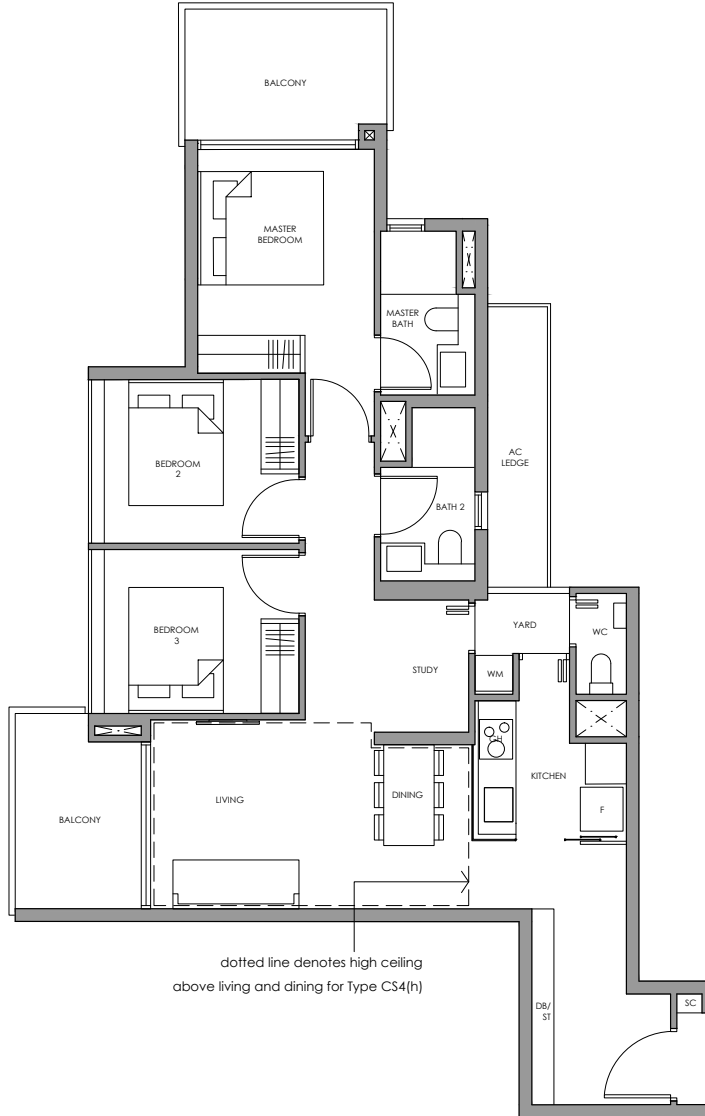
All plans are subject to change as may be required or approved by the relevant authorities. All floor areas are approximate measurements only and are subject to final survey. The balcony shall not be enclosed except with the approved balcony screen. For an illustration of the approved balcony screen, please refer to the diagram annexed hereto as "Annexure 1"

3-Bedroom + Study

Type CS4a(p)



Type CS4a
Type CS4a(h)



- | | |
|----------------------------|-------|
| Fridge | F |
| Gas Hob | GH |
| Shoe Cabinet | SC |
| Washer cum Dryer | WM |
| Distribution Board / Store | DB/ST |



Type CS4a(p)

103 sq m / 1109 sq ft
Inclusive of 14 sq m PES
& 5 sq m AC Ledge

Block 18
#01-63



Type CS4a

103 sq m / 1109 sq ft
Inclusive of 14 sq m Balcony
& 5 sq m AC Ledge

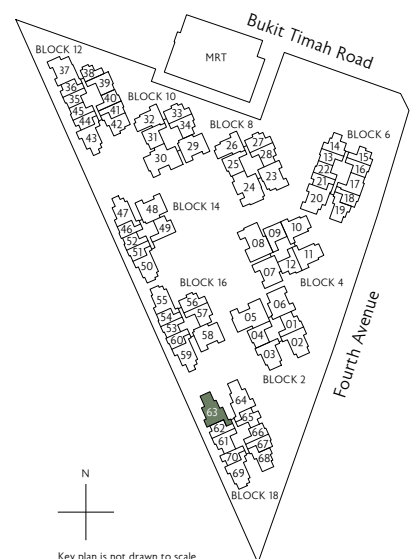
Block 18
#02-63 to #05-63



Type CS4a(h)

103 sq m / 1109 sq ft
Inclusive of 14 sq m Balcony
& 5 sq m AC Ledge

Block 18
#06-63



0 1 3 5M

* Mirror Image ^ High Ceiling



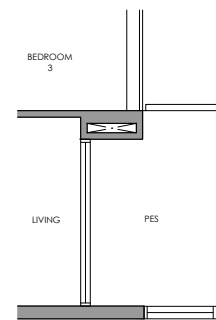
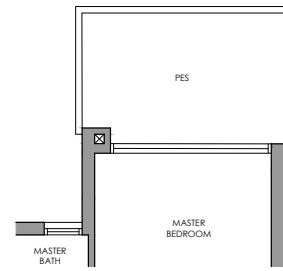
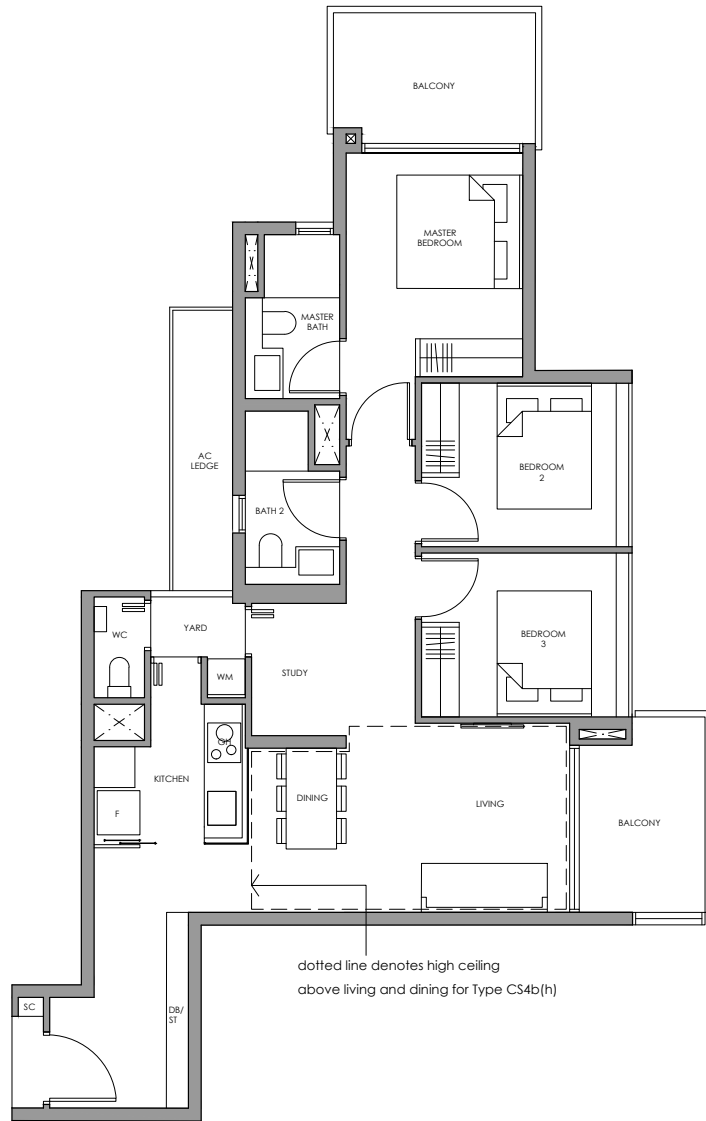
Key plan is not drawn to scale

All plans are subject to change as may be required or approved by the relevant authorities. All floor areas are approximate measurements only and are subject to final survey. The balcony shall not be enclosed except with the approved balcony screen. For an illustration of the approved balcony screen, please refer to the diagram annexed hereto as "Annexure 1"

3-Bedroom + Study

Type CS4b
Type CS4b(h)

Type CS4b(p)



- | | |
|----------------------------|-------|
| Fridge | F |
| Gas Hob | GH |
| Shoe Cabinet | SC |
| Washer cum Dryer | WM |
| Distribution Board / Store | DB/ST |

✦
Type CS4b(p)

103 sq m / 1109 sq ft
Inclusive of 14 sq m PES
& 5 sq m AC Ledge

Block 18
#01-64

✦
Type CS4b

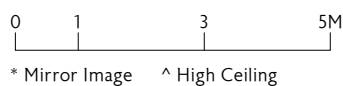
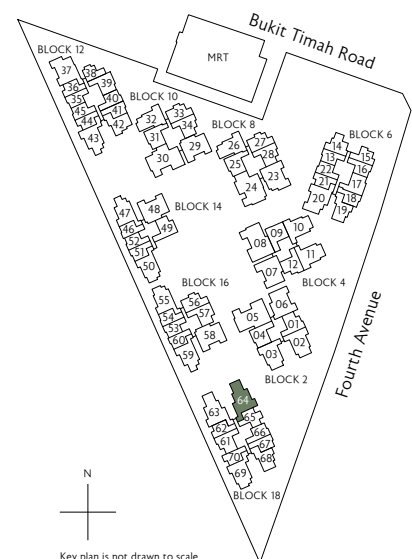
103 sq m / 1109 sq ft
Inclusive of 14 sq m Balcony
& 5 sq m AC Ledge

Block 18
#02-64 to #05-64

✦
Type CS4b(h)

103 sq m / 1109 sq ft
Inclusive of 14 sq m Balcony
& 5 sq m AC Ledge

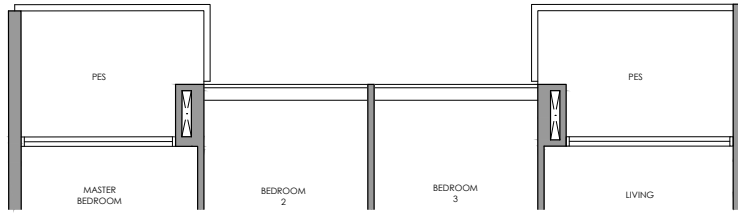
Block 18
#06-64



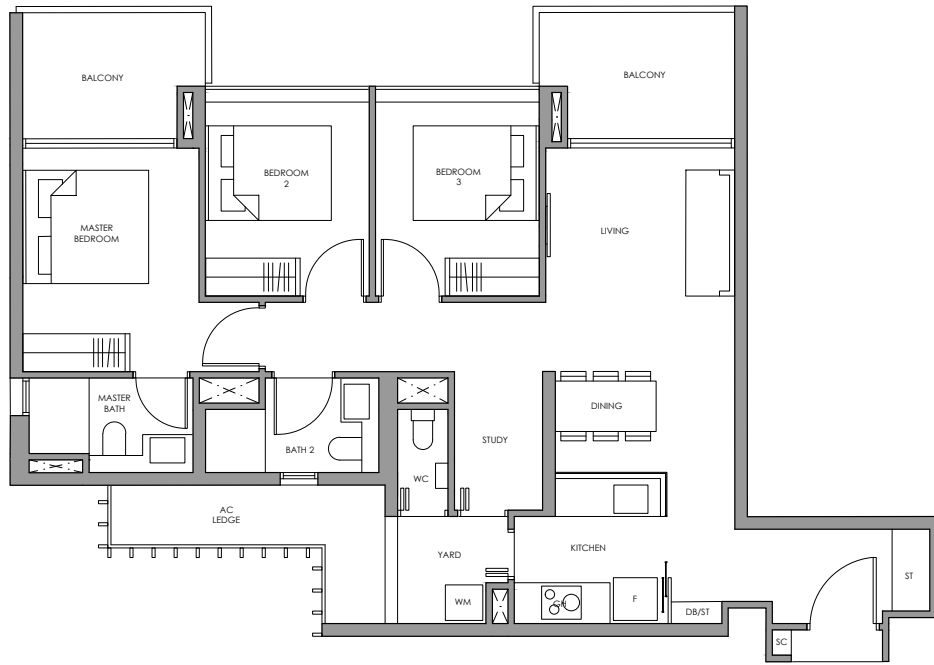
All plans are subject to change as may be required or approved by the relevant authorities. All floor areas are approximate measurements only and are subject to final survey. The balcony shall not be enclosed except with the approved balcony screen. For an illustration of the approved balcony screen, please refer to the diagram annexed hereto as "Annexure 1"

3-Bedroom + Study

Type CS5(p)



Type CS5



- | | |
|----------------------------|-------|
| Fridge | F |
| Gas Hob | GH |
| Shoe Cabinet | SC |
| Washer cum Dryer | WM |
| Distribution Board / Store | DB/ST |



Type CS5(p)

103 sq m / 1109 sq ft
Inclusive of 13 sq m PES
& 6 sq m AC Ledge

Block 6
#01-20



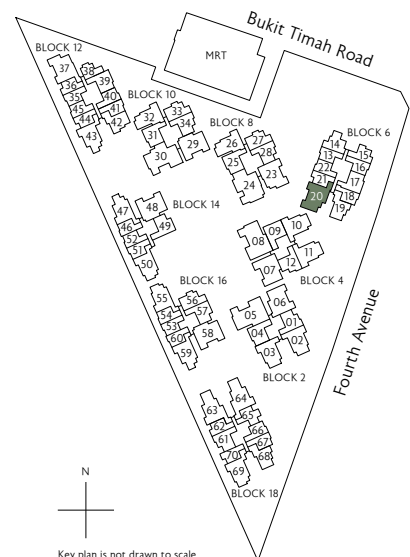
Type CS5

103 sq m / 1109 sq ft
Inclusive of 13 sq m Balcony
& 6 sq m AC Ledge

Block 6
#02-20 to #10-20



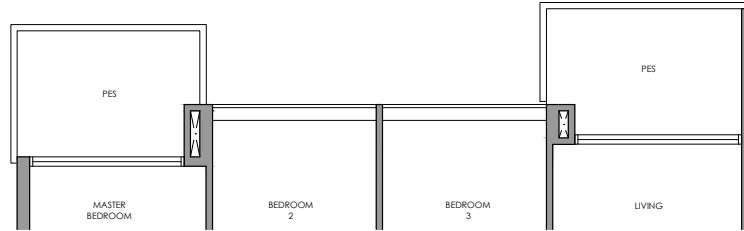
* Mirror Image ^ High Ceiling



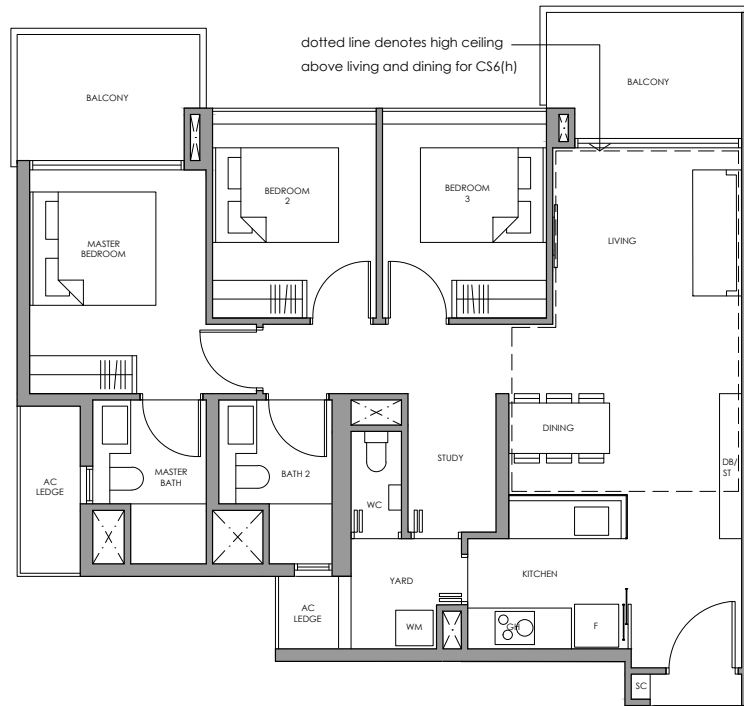
All plans are subject to change as may be required or approved by the relevant authorities. All floor areas are approximate measurements only and are subject to final survey. The balcony shall not be enclosed except with the approved balcony screen. For an illustration of the approved balcony screen, please refer to the diagram annexed hereto as "Annexure 1"

3-Bedroom + Study

Type CS6(p)



Type CS6
Type CS6(h)



- | | |
|----------------------------|-------|
| Fridge | F |
| Gas Hob | GH |
| Shoe Cabinet | SC |
| Washer cum Dryer | WM |
| Distribution Board / Store | DB/ST |



Type CS6(p)

103 sq m / 1109 sq ft
Inclusive of 13 sq m PES
& 5 sq m AC Ledge

Block 2
#01-06



Type CS6

103 sq m / 1109 sq ft
Inclusive of 13 sq m Balcony
& 5 sq m AC Ledge

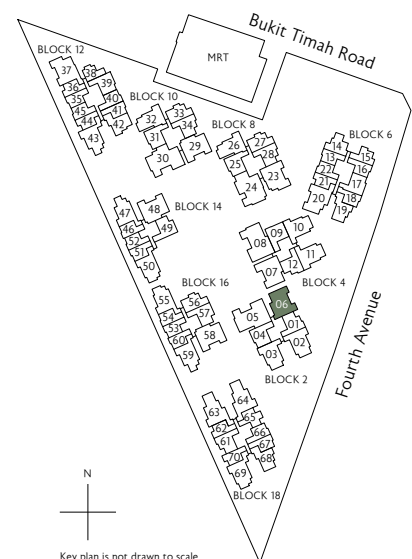
Block 2
#02-06 to #05-06



Type CS6(h)

103 sq m / 1109 sq ft
Inclusive of 13 sq m Balcony
& 5 sq m AC Ledge

Block 2
#06-06



0 1 3 5M

* Mirror Image ^ High Ceiling

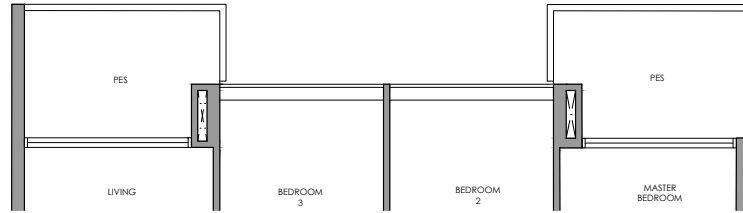


Key plan is not drawn to scale

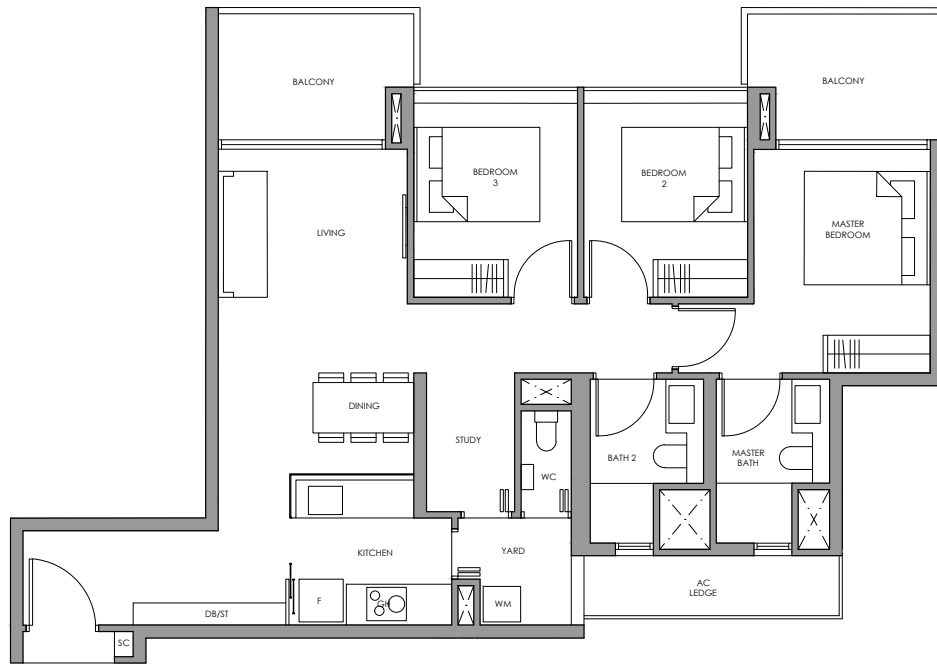
All plans are subject to change as may be required or approved by the relevant authorities. All floor areas are approximate measurements only and are subject to final survey. The balcony shall not be enclosed except with the approved balcony screen. For an illustration of the approved balcony screen, please refer to the diagram annexed hereto as "Annexure 1"

3-Bedroom + Study

Type CS7(p)



Type CS7



- | | |
|----------------------------|-------|
| Fridge | F |
| Gas Hob | GH |
| Shoe Cabinet | SC |
| Washer cum Dryer | WM |
| Distribution Board / Store | DB/ST |



Type CS7(p)

104 sq m / 1119 sq ft
Inclusive of 13 sq m PES
& 5 sq m AC Ledge

Block 12
#01-37



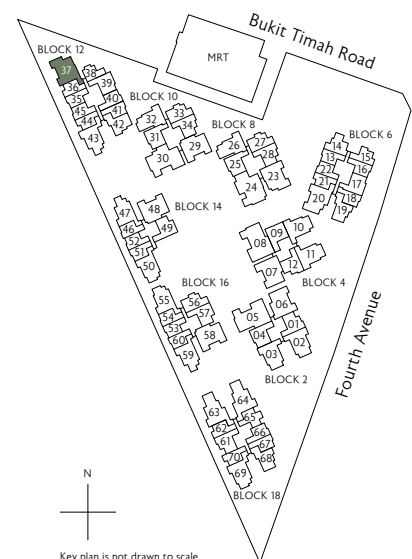
Type CS7

104 sq m / 1119 sq ft
Inclusive of 13 sq m Balcony
& 5 sq m AC Ledge

Block 12
#02-37 to #10-37



* Mirror Image ^ High Ceiling



Key plan is not drawn to scale

All plans are subject to change as may be required or approved by the relevant authorities. All floor areas are approximate measurements only and are subject to final survey. The balcony shall not be enclosed except with the approved balcony screen. For an illustration of the approved balcony screen, please refer to the diagram annexed hereto as "Annexure 1"