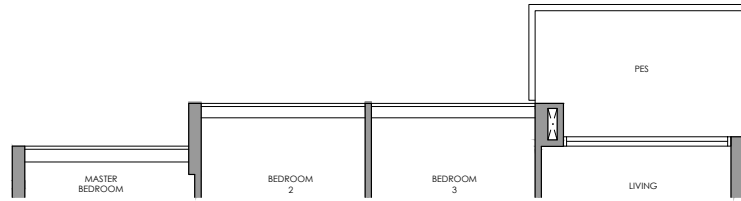
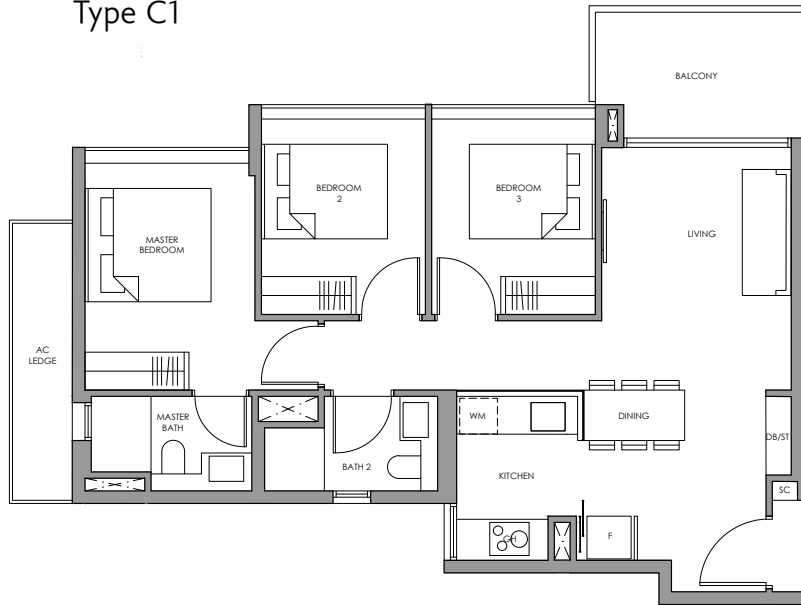


# 3-Bedroom

Type C1(p)



Type C1



- |                            |       |
|----------------------------|-------|
| Fridge                     | F     |
| Gas Hob                    | GH    |
| Shoe Cabinet               | SC    |
| Washer cum Dryer           | WM    |
| Distribution Board / Store | DB/ST |



Type C1(p)

85 sq m / 915 sq ft  
Inclusive of 7 sq m PES  
& 5 sq m AC Ledge

Block 8  
#01-26

Block 10  
#01-32



Type C1

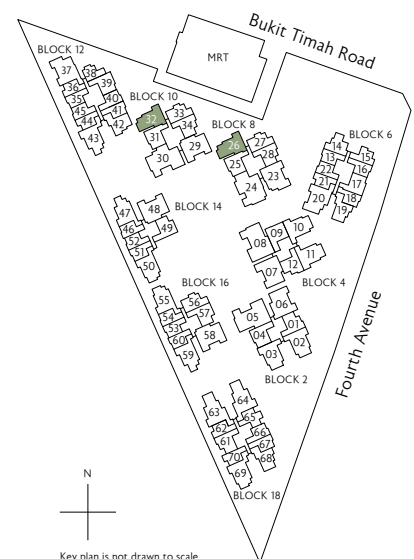
85 sq m / 915 sq ft  
Inclusive of 7 sq m Balcony  
& 5 sq m AC Ledge

Block 8  
#02-26 to #10-26

Block 10  
#02-32 to #10-32



\* Mirror Image ^ High Ceiling

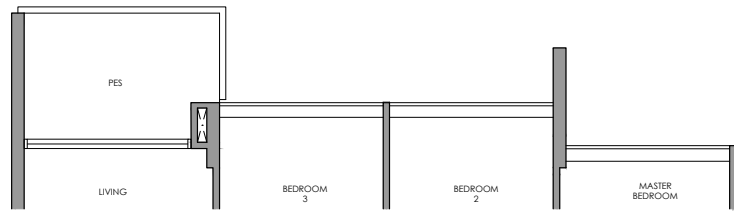


N  
Key plan is not drawn to scale

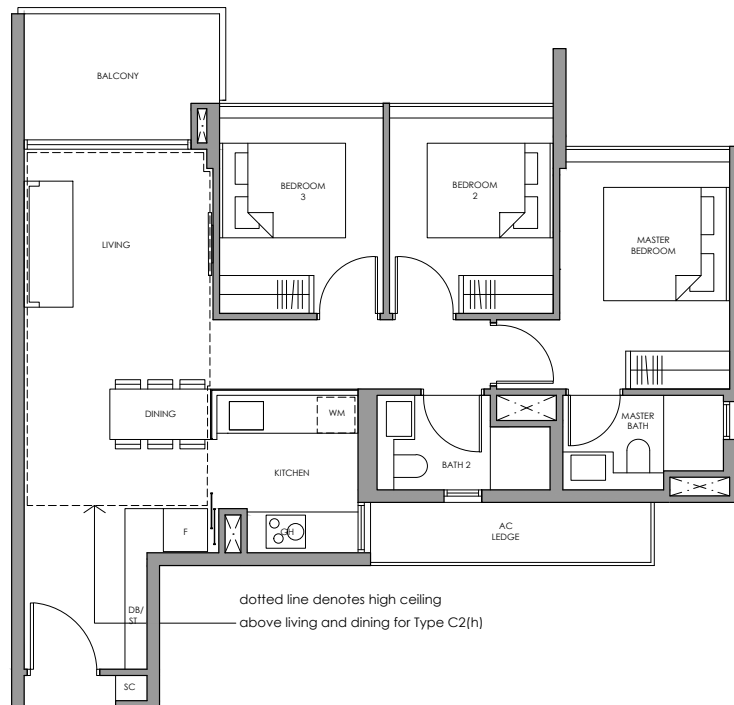
All plans are subject to change as may be required or approved by the relevant authorities. All floor areas are approximate measurements only and are subject to final survey. The balcony shall not be enclosed except with the approved balcony screen. For an illustration of the approved balcony screen, please refer to the diagram annexed hereto as "Annexure 1"

# 3-Bedroom

Type C2(p)



Type C2  
Type C2(h)



Fridge  
Gas Hob  
Shoe Cabinet  
Washer cum Dryer  
Distribution Board / Store

F  
GH  
SC  
WM  
DB/ST



Type C2(p)

88 sq m / 947 sq ft  
Inclusive of 7 sq m PES  
& 5 sq m AC Ledge

Block 2  
#01-02  
#01-03 \*

Block 4  
#01-10  
#01-11 \*



Type C2

88 sq m / 947 sq ft  
Inclusive of 7 sq m Balcony  
& 5 sq m AC Ledge

Block 2  
#02-02 to #05-02  
#02-03 to #05-03 \*

Block 4  
#02-10 to #05-10  
#02-11 to #06-11 \*

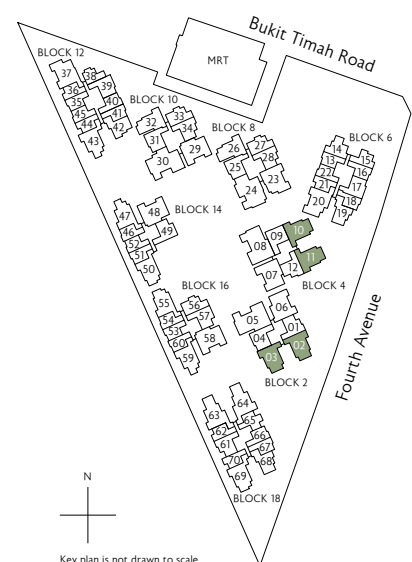


Type C2(h)

88 sq m / 947 sq ft  
Inclusive of 7 sq m Balcony  
& 5 sq m AC Ledge

Block 2  
#06-02  
#06-03 \*

Block 4  
#06-10



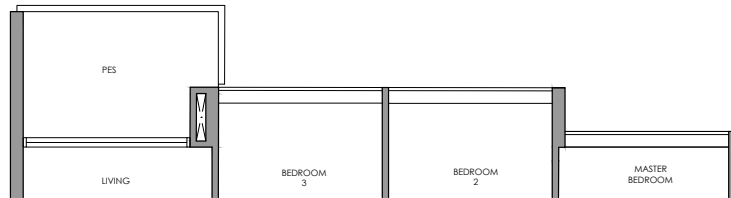
0 1 3 5M

\* Mirror Image ^ High Ceiling

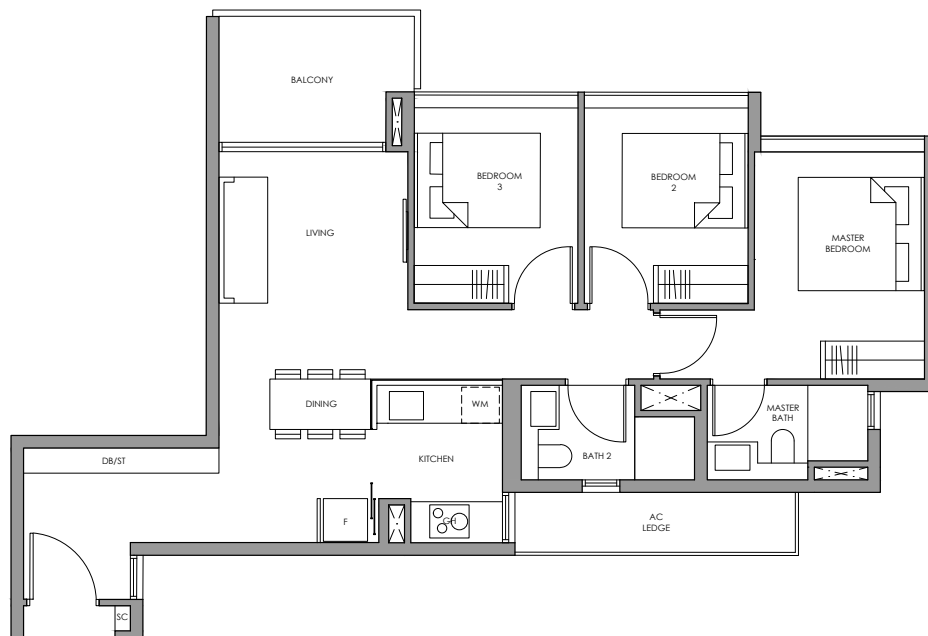
All plans are subject to change as may be required or approved by the relevant authorities. All floor areas are approximate measurements only and are subject to final survey. The balcony shall not be enclosed except with the approved balcony screen. For an illustration of the approved balcony screen, please refer to the diagram annexed hereto as "Annexure 1"

# 3-Bedroom

## Type C3(p)



## Type C3



- |                            |       |
|----------------------------|-------|
| Fridge                     | F     |
| Gas Hob                    | GH    |
| Shoe Cabinet               | SC    |
| Washer cum Dryer           | WM    |
| Distribution Board / Store | DB/ST |



### Type C3(p)

89 sq m / 958 sq ft  
Inclusive of 7 sq m PES  
& 5 sq m AC Ledge

Block 14  
#01-50 \*

Block 16  
#01-55



### Type C3

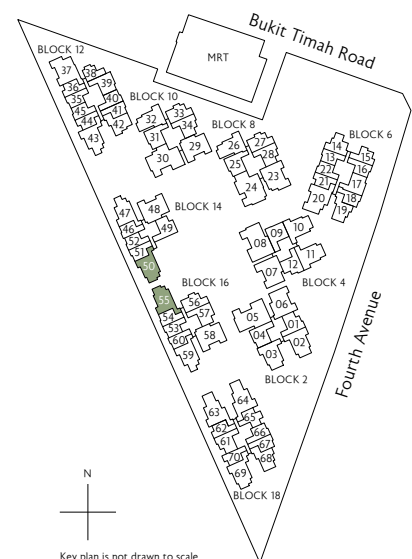
89 sq m / 958 sq ft  
Inclusive of 7 sq m Balcony  
& 5 sq m AC Ledge

Block 14  
#02-50 \*^

Block 16  
#02-55 ^



\* Mirror Image ^ High Ceiling

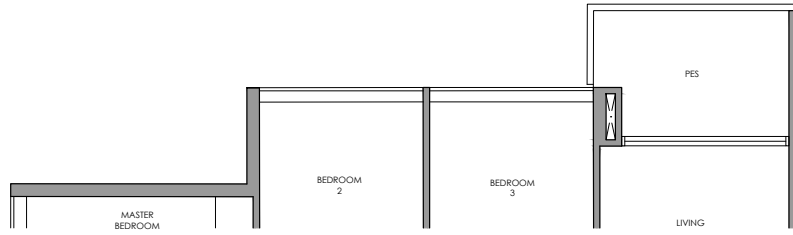


N  
Key plan is not drawn to scale

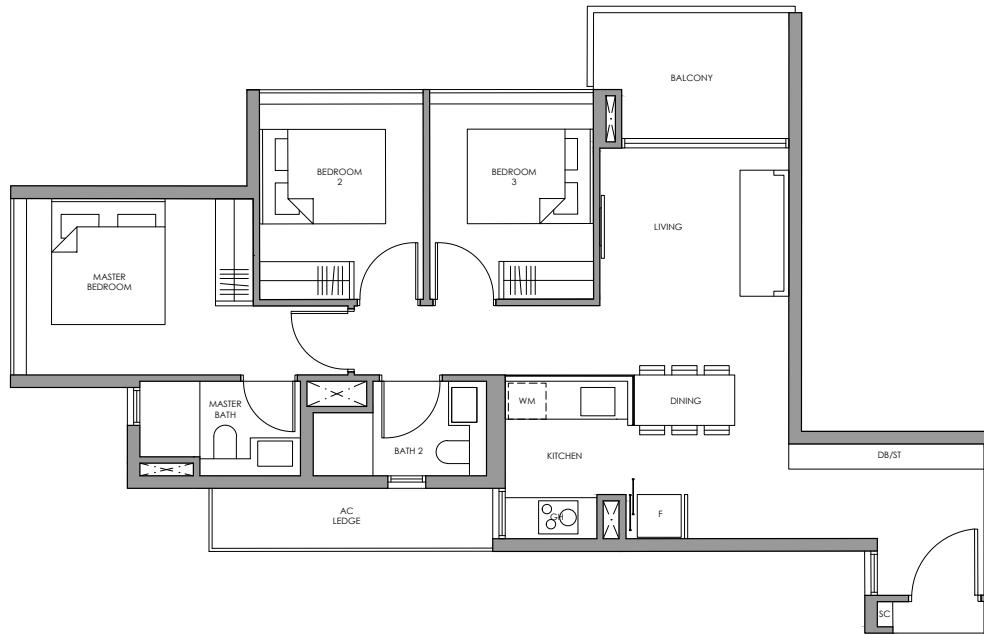
All plans are subject to change as may be required or approved by the relevant authorities. All floor areas are approximate measurements only and are subject to final survey. The balcony shall not be enclosed except with the approved balcony screen. For an illustration of the approved balcony screen, please refer to the diagram annexed hereto as "Annexure 1"

# 3-Bedroom

Type C4(p)



Type C4



- |                            |       |
|----------------------------|-------|
| Fridge                     | F     |
| Gas Hob                    | GH    |
| Shoe Cabinet               | SC    |
| Washer cum Dryer           | WM    |
| Distribution Board / Store | DB/ST |



Type C4(p)

89 sq m / 958 sq ft  
Inclusive of 7 sq m PES  
& 5 sq m AC Ledge

Block 14  
#01-47 \*

Block 16  
#01-59



Type C4

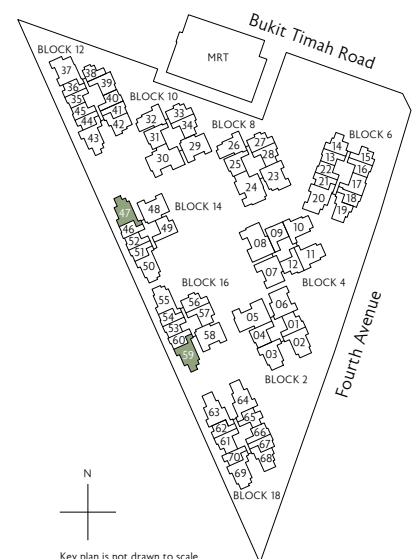
89 sq m / 958 sq ft  
Inclusive of 7 sq m Balcony  
& 5 sq m AC Ledge

Block 14  
#02-47 \*^

Block 16  
#02-59 ^



\* Mirror Image ^ High Ceiling



N  
Key plan is not drawn to scale

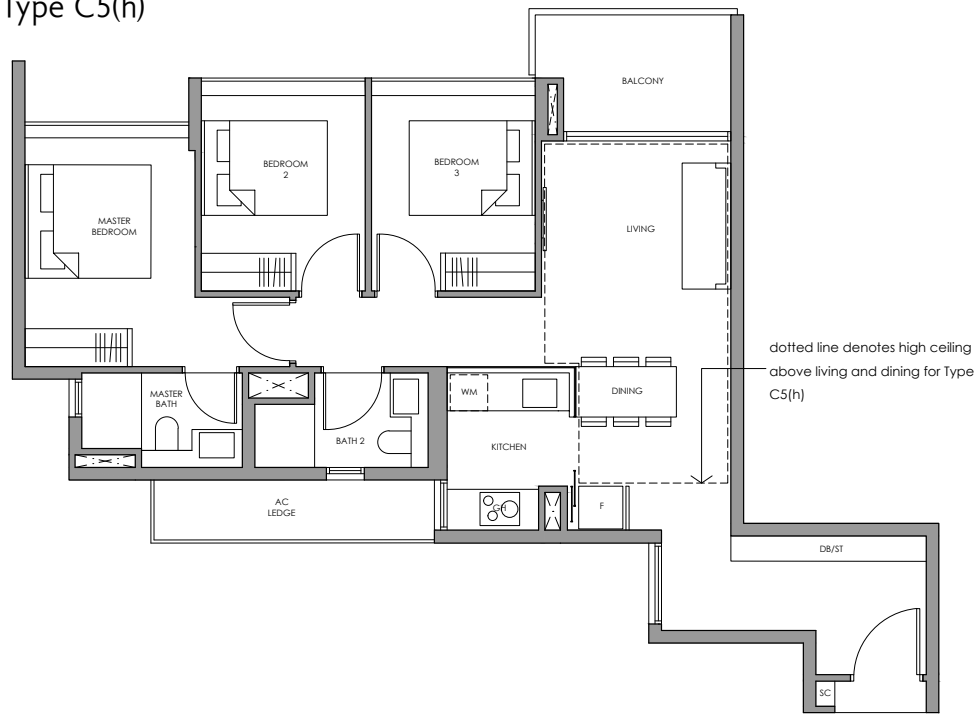
All plans are subject to change as may be required or approved by the relevant authorities. All floor areas are approximate measurements only and are subject to final survey. The balcony shall not be enclosed except with the approved balcony screen. For an illustration of the approved balcony screen, please refer to the diagram annexed hereto as "Annexure 1"

# 3-Bedroom

Type C5(p)



Type C5  
Type C5(h)



- |                            |       |
|----------------------------|-------|
| Fridge                     | F     |
| Gas Hob                    | GH    |
| Shoe Cabinet               | SC    |
| Washer cum Dryer           | WM    |
| Distribution Board / Store | DB/ST |



Type C5(p)

90 sq m / 969 sq ft  
Inclusive of 6 sq m PES  
& 5 sq m AC Ledge

Block 18  
#01-69



Type C5

90 sq m / 969 sq ft  
Inclusive of 6 sq m Balcony  
& 5 sq m AC Ledge

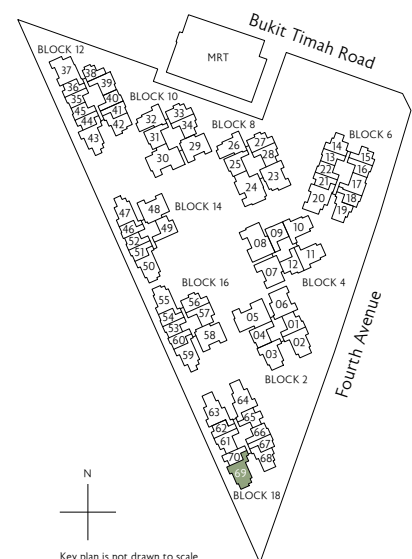
Block 18  
#02-69 to #05-69



Type C5(h)

90 sq m / 969 sq ft  
Inclusive of 6 sq m Balcony  
& 5 sq m AC Ledge

Block 18  
#06-69



\* Mirror Image ^ High Ceiling

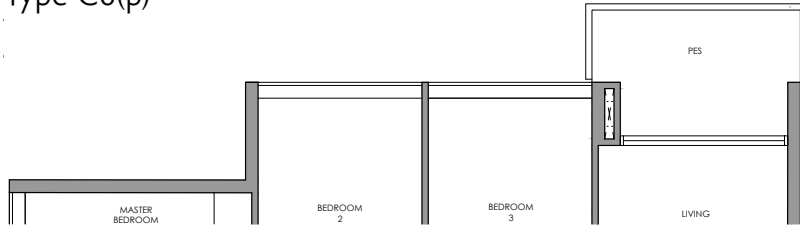


Key plan is not drawn to scale

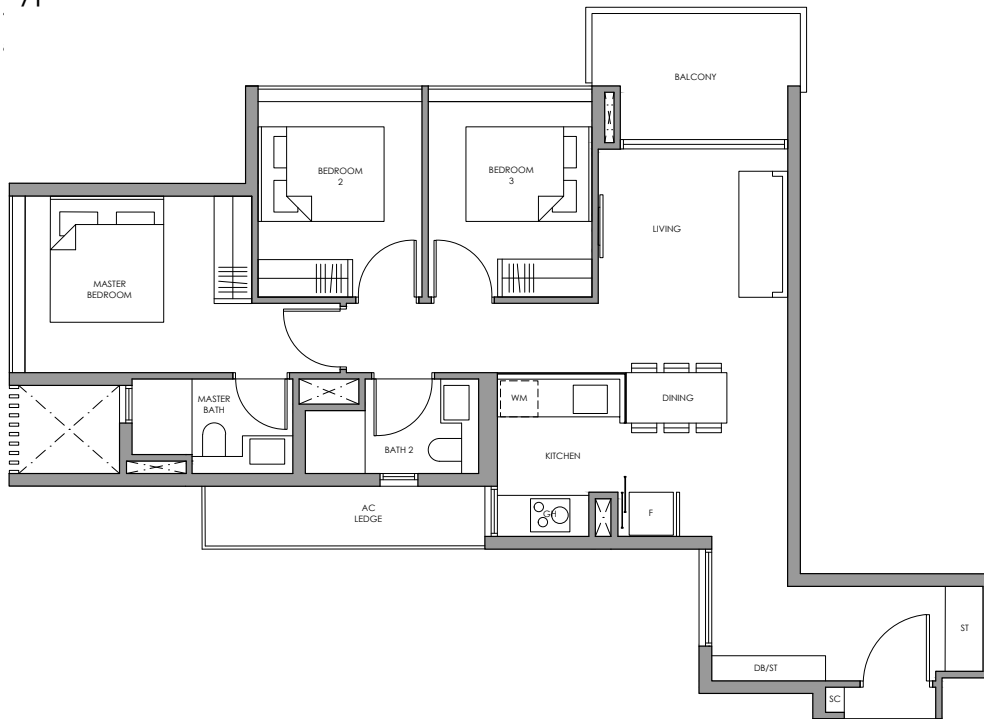
All plans are subject to change as may be required or approved by the relevant authorities. All floor areas are approximate measurements only and are subject to final survey. The balcony shall not be enclosed except with the approved balcony screen. For an illustration of the approved balcony screen, please refer to the diagram annexed hereto as "Annexure 1"

# 3-Bedroom

Type C6(p)



Type C6



- |                            |       |
|----------------------------|-------|
| Fridge                     | F     |
| Gas Hob                    | GH    |
| Shoe Cabinet               | SC    |
| Washer cum Dryer           | WM    |
| Distribution Board / Store | DB/ST |



Type C6(p)

90 sq m / 969 sq ft  
Inclusive of 7 sq m PES  
& 5 sq m AC Ledge

Block 12  
#01-43



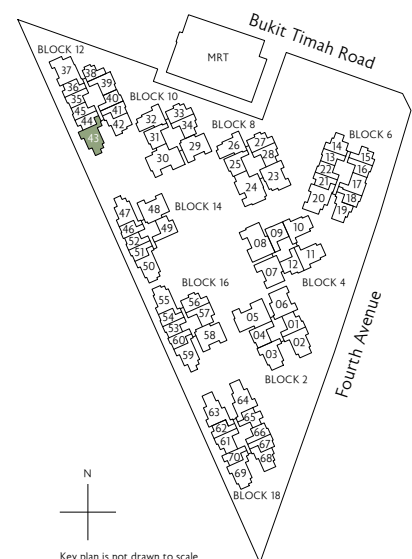
Type C6

90 sq m / 969 sq ft  
Inclusive of 7 sq m Balcony  
& 5 sq m AC Ledge

Block 12  
#02-43 to #06-43



\* Mirror Image ^ High Ceiling



Key plan is not drawn to scale

All plans are subject to change as may be required or approved by the relevant authorities. All floor areas are approximate measurements only and are subject to final survey. The balcony shall not be enclosed except with the approved balcony screen. For an illustration of the approved balcony screen, please refer to the diagram annexed hereto as "Annexure 1"